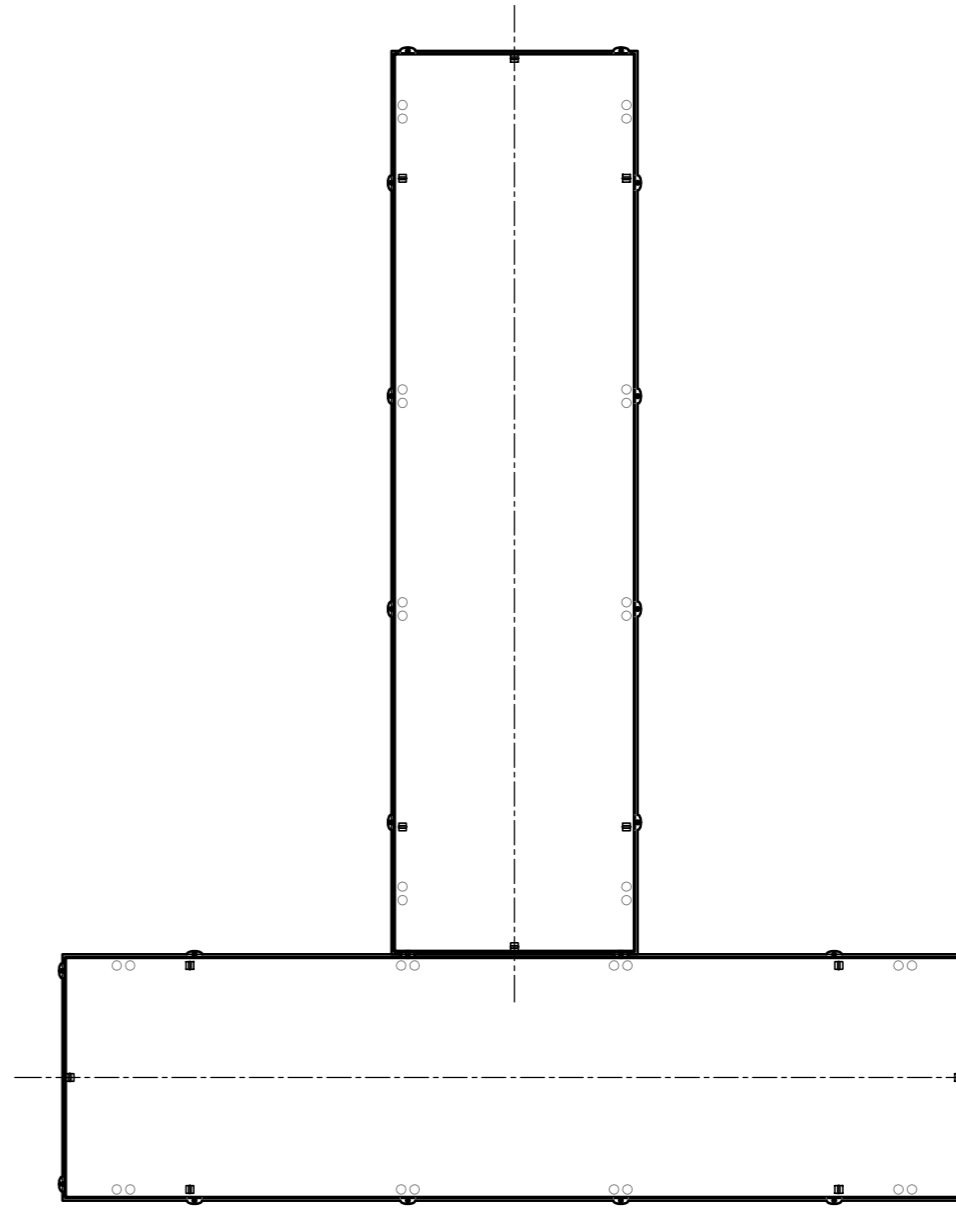
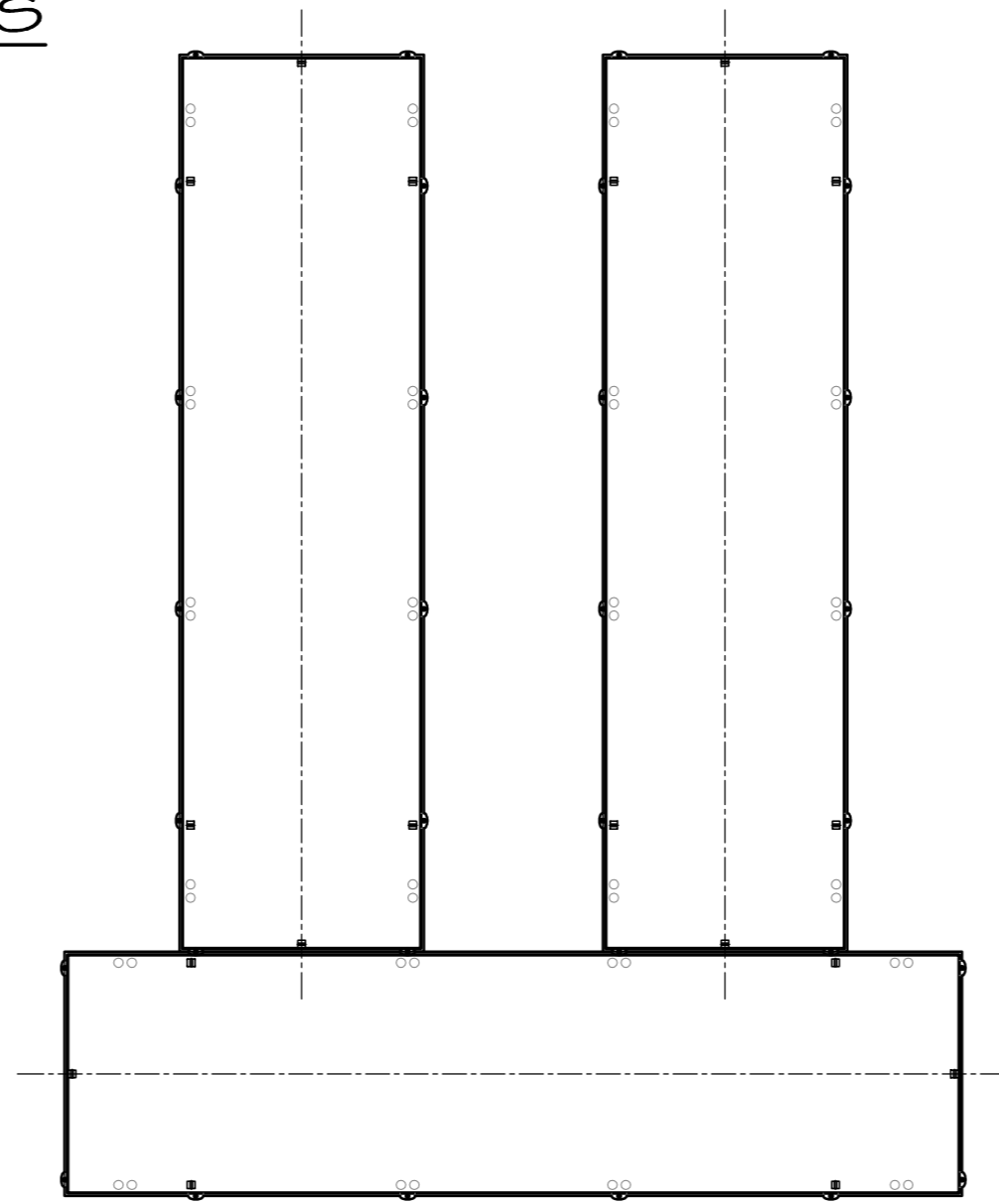
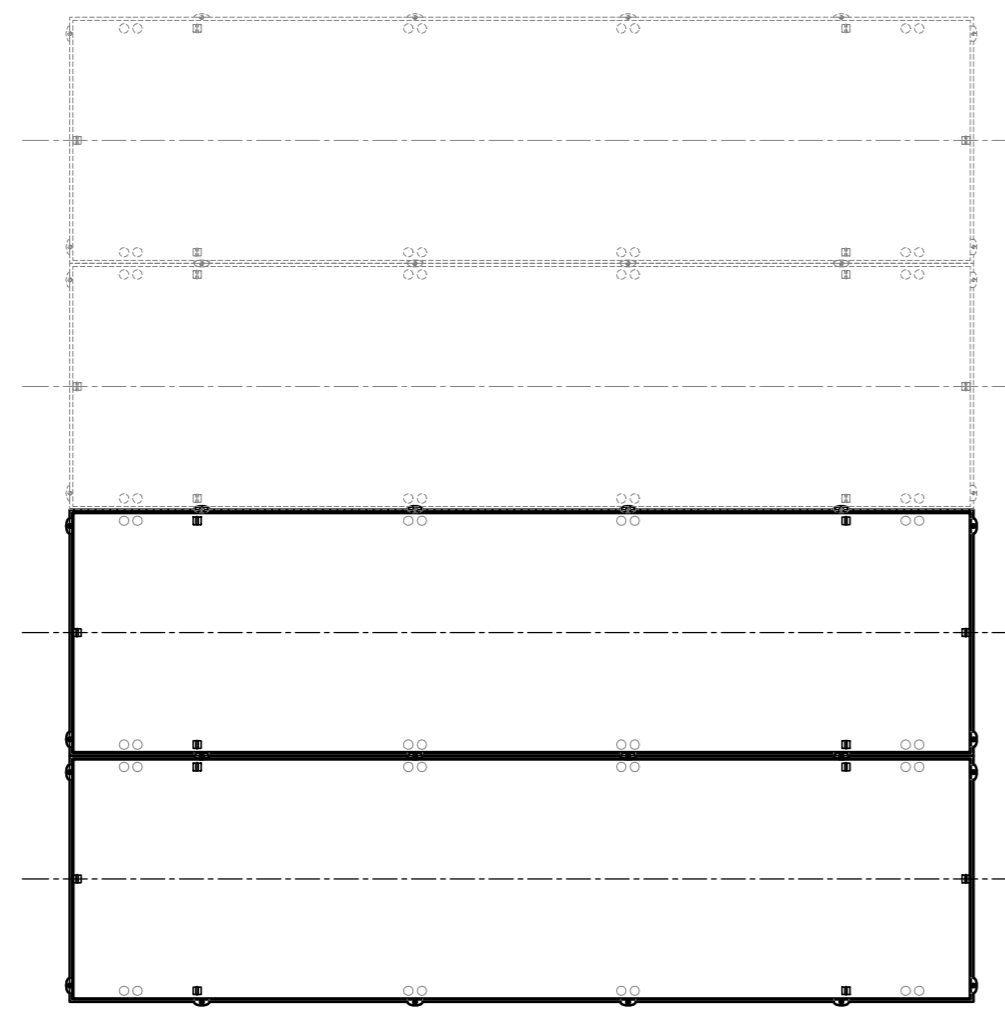


PRINCIPAL DIMENSIONS

L.O.A.	12.0m
MEASURED LENGTH	11.7 m
BEAM,	3.4 m (WITH BELTINGS)
DRAUGHT (LIGHTSHIP)	0.125 m
DISPLACEMENT	2.5 TONNE (LIGHTSHIP)
CAPACITY,	20 TONNE*
CAPACITY, (PAIR)	45 TONNE*
* SUBJECT TO CARGO HEIGHT	
BALLAST TANKS	250L (EACH CORNER)

OPTIONAL COUPLING ARRANGEMENTS

SCALE 1:100



CHRIS TUCKER MARINE DESIGN
 PO BOX 194, OLINDA, VICTORIA, 3788, AUSTRALIA
 FAX/PHONE +61 (0)3 5968 1921, INFO@CTMD.COM.AU

**12m COUPLING BARGES
 FOR ALUMARINE
 GENERAL ARRANGEMENT**

BY CT DATE MAR '18 SCALE 1:20 @ A1 DRWG PR

THIS DRAWING MAY NOT BE COPIED, COMMUNICATED TO ANY PERSON OR USED FOR MANUFACTURE WITHOUT THE EXPRESS WRITTEN CONSENT OF THE DESIGNER.

