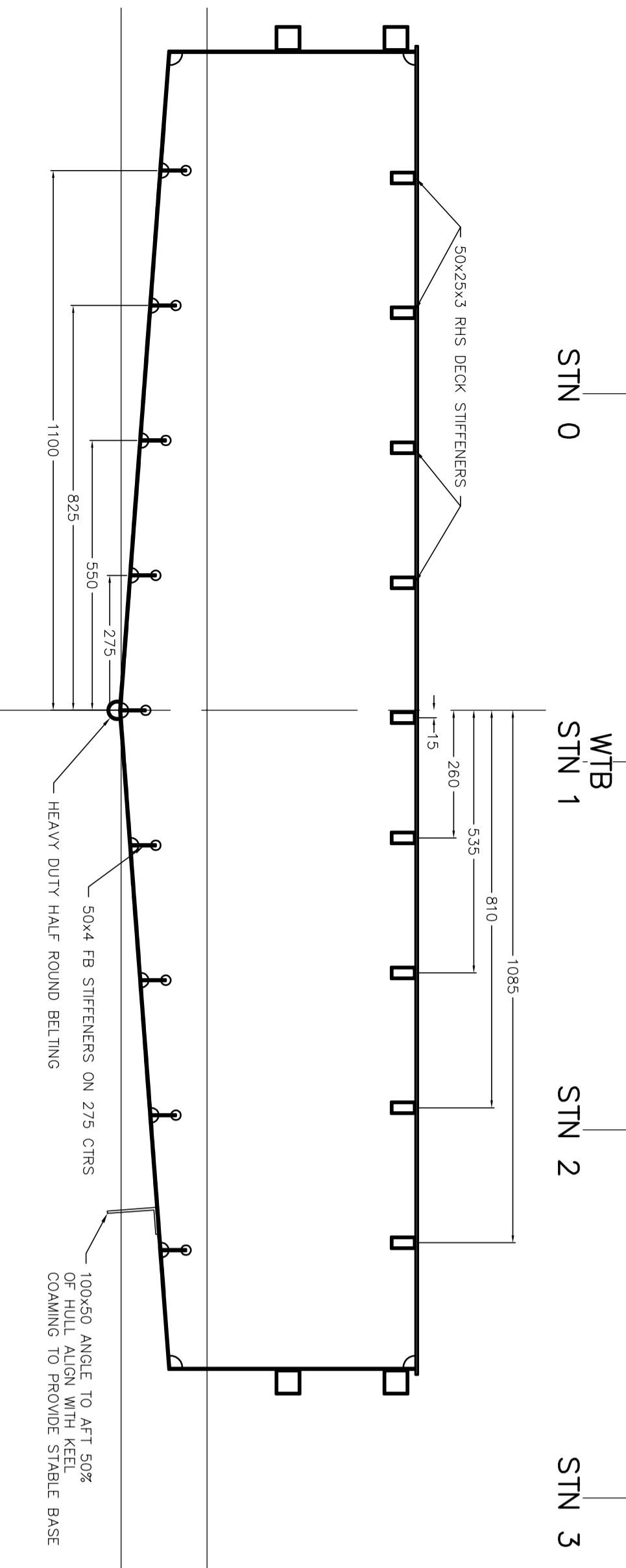
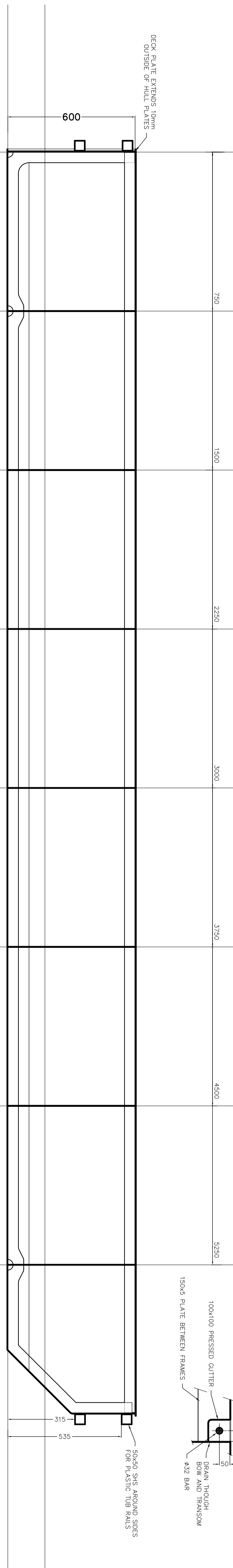
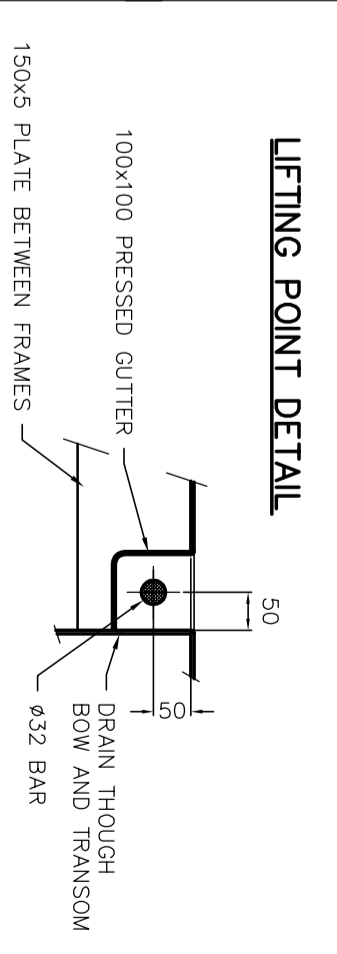
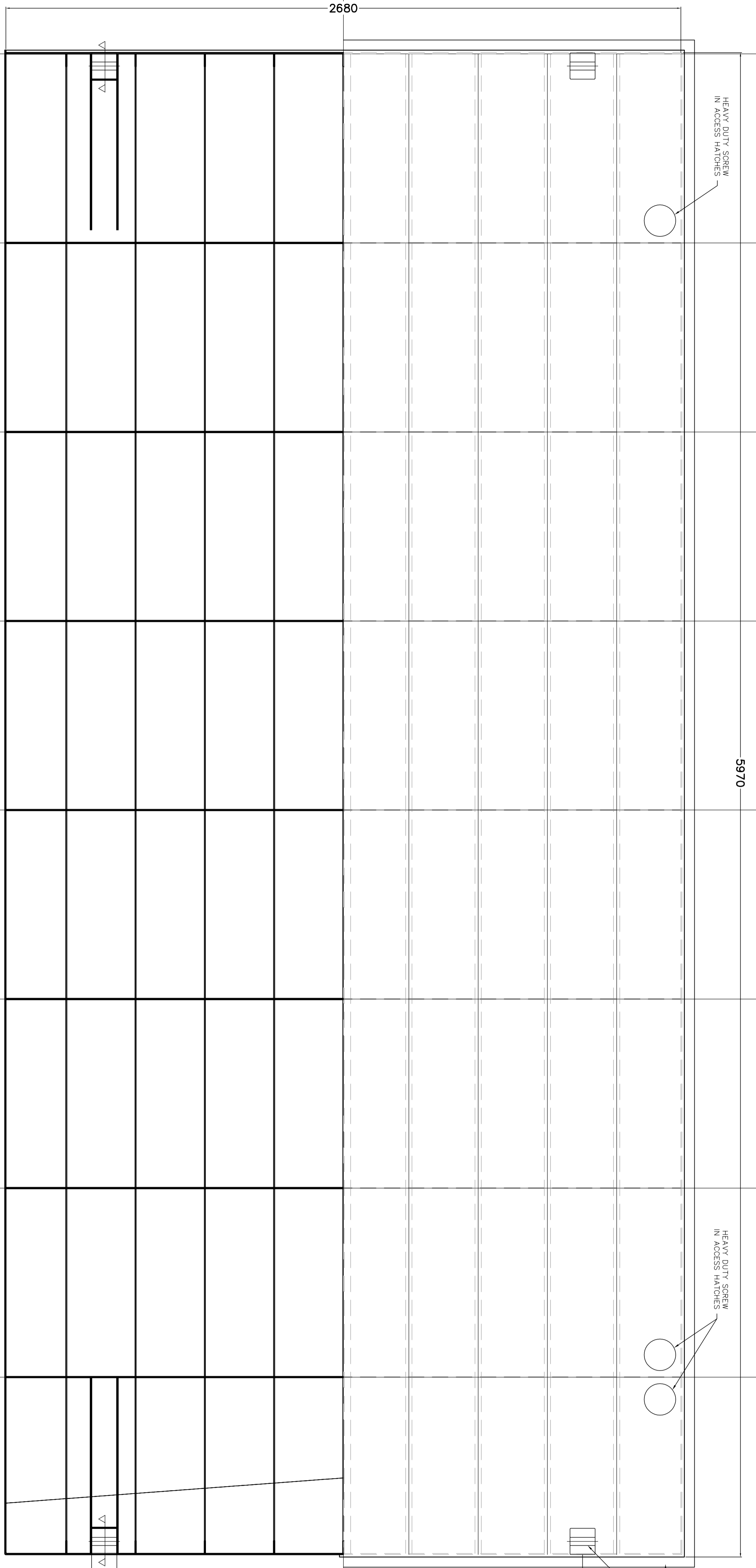
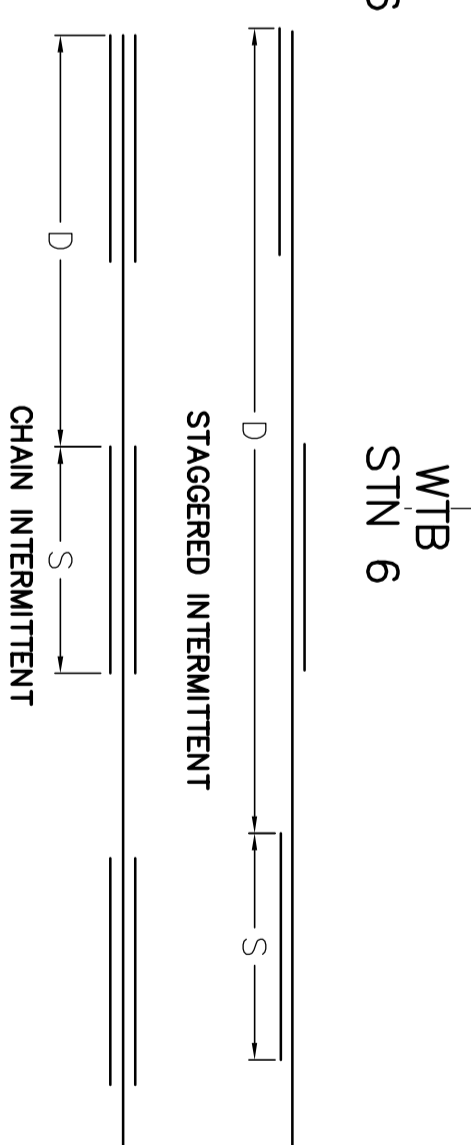


STN 0 STN 1 STN 2 STN 3 STN 4 STN 5 STN 6 STN 7



POSITION	DESCRIPTION OF TYPE
KEEL BAR TO HULL	CONTINUOUS Δ15.3
HULL SHELL PLATES	BUTT WELD-FULL PENETRATION-SEAL WELD
LONG. STRINGERS TO BOTTOM PLATES	CONTINUOUS Δ15.3
LONG. SHELVES TO SIDE PLATES AND OF FRAME 4	STAGGERED INTERMITTENT Δ15.3 S=40, d=150 DOUBLE AT ENDS
TRANSVERSE FRAMES TO BOTTOM PLATE	CONTINUOUS Δ15.3
LONGITUDINAL STRINGERS TO TRANSVERSE FRAMES	CONTINUOUS Δ15.3
HULL SHELL TO DECK PLATING	CONTINUOUS Δ15.3
SOLE TO DECK STIFFENERS	PLUG INTERMITTENT Δ15.3 S=50, d=200
STIFFENING STRUCTURE TO TRANSOM	CONTINUOUS Δ15.3

MATERIAL SCHEDULE	POSITION	DESCRIPTION OF TYPE
BOTTOM PLATES	4mm 5083 H321/116	
TOPSIDES	4mm 5083 H321/116	
DECK	5mm 5083 H321/116	
TRANSOM	5mm 5083 H321/116	



CHRIS TUCKER MARINE DESIGN PTY LTD.  
 PO BOX 194, OLINDA, VICTORIA, 3788, AUSTRALIA  
 PHONE +61 (0)3 9728 1754, INFO@CTMD.COM.AU  
**6.5m LANDING BARGE**  
**FOR ALUMMARINE**  
**DUMB BARGE**

BT DATE 17 MAR 17  
 CT DATE 17 MAR 17  
 SCALD 1:10 @ A1  
 DRWS 232/10

THIS DRAWING MAY NOT BE COPIED, COMMUNICATED TO ANY PERSON OR USED FOR MANUFACTURE WITHOUT THE EXPRESS WRITTEN CONSENT OF THE DESIGNER.